

The macroeconomic effects of liquidity supply during financial crises



Davide Porcellacchia | European Central Bank (ECB)

Kevin Sheedy | London School of Economics

Keywords: bank runs, bank-lending channel, liquidity

JEL codes: E40, E41, E44, E50, E51, G01, G21

Abstract

Negative economic shocks can cause waves of investor pessimism about the resilience of banks, which, in turn, generate additional adverse macroeconomic effects. This is commonly cited as an explanation for the economic havoc wrought by the global financial crisis of 2007-08.¹ We introduce the notion of pessimism in a real business cycle model, which is a standard framework for business cycle analysis. The possibility of waves of pessimism generates countercyclical demand from banks for liquid assets (e.g., bank reserves). With the model, we study the macroeconomic effects of the government supplying liquid assets and find that a policy of accommodating banks' demand is effective in stabilising the economy. Finally, we support this finding with empirical evidence.

Note: This column first appeared as a Research Bulletin of the European Central Bank <https://www.ecb.europa.eu/pub/economic-research/resbull/html/index.en.html>. The authors gratefully acknowledge the comments from Alexandra Buist, Michael Ehrmann, and Alexander Popov. The views expressed here are those of the author and do not necessarily represent the views of the European Central Bank or the Eurosystem.

¹ The bank failures of March 2023 are a reminder that vulnerability to runs remains a major concern (Beck et al, 2024).

Introduction

Banks' funding inflows and outflows can be volatile.² They therefore keep a buffer of liquid assets, including bank reserves, on their balance sheets to ensure they can cope with high outflows without having to either borrow at an expensive interest rate (Bianchi and Bigio, 2022) or sell illiquid assets (Drechsler et al., 2018). But can we think of episodes such as the global financial crisis as being the result of unluckily high funding outflows hitting banks?

In Porcellacchia and Sheedy (2024), we model the source of volatility in bank funding. To do so, we adopt the viewpoint of a literature started by Diamond and Dybvig (1983): banks are vulnerable to waves of pessimism that might trigger a bank run. Pessimism about banks is self-fulfilling because it reduces their access to funding, forcing them to sell illiquid assets at a loss. This, in turn, confirms investors' pessimistic expectations about banks' financial performance. The possibility of self-fulfilling pessimism poses a coordination problem for investors in bank assets. But what is it that makes investors coordinate on pessimism?

Goldstein and Pauzner (2005) show that, under a minor deviation from perfect information, banks' balance sheet fundamentals determine the likelihood of pessimism arising.³ This is the approach we take to the coordination problem.⁴ We find that pessimism is more likely to hit banks with small liquidity buffers because they are more fragile, so a small number of pessimistic investors is enough to force such a bank to sell illiquid assets and start the vicious cycle of self-fulfilling pessimism. To guard against this, banks increase their demand for liquid assets to reduce their fragility and stem waves of pessimism.

The mechanics of pessimism

Adverse economic shocks are a driver of waves of pessimism in the model. This is because banks' net worth the difference between the value of their assets and debt liabilities - plays a similar role to their liquidity buffers in determining fragility, and banks' net worth is highly exposed to the performance of the economy.⁵ In other words, banks with low net worth are more likely to be caught in a wave of pessimism, and in bad times banks make losses that reduce their net worth. This is in line with a common narrative about the events that unfolded during the global financial crisis: banks began finding it hard to obtain funding after an unexpected collapse in house prices that reduced their net worth.

An increase in the likelihood of pessimism raises banks' funding costs and hence amplifies the macroeconomic effects of shocks to the economy. Investment in the economy is crucially dependent on bank credit. If banks are starved of funds as a result of pessimism, they supply less credit and so investment takes a hit. Quantitatively, pessimism increases the effect on economic output of a shock to the value of bank assets by about one-third on impact. Pessimism also makes the effects of shocks last longer. This propagation of shocks through time is due to the negative impact of more expensive funding on banks' return on equity. With a low return on equity, it takes a long time for banks to build their net worth back up.

In the model, banks respond to adverse economic shocks by increasing their demand for liquid assets in an attempt to reduce their fragility and thereby stem pessimism. Unless the supply of liquid assets is perfectly elastic, this behaviour means that the prices of liquid assets increase in bad times. Evidence for this behaviour is provided in the left-hand panel of Figure 1, which plots interest rate spreads during the global financial crisis. In this period both the funding spread, which measures funding costs for banks, and the liquidity premium, which measures the cost of holding liquid

² The term "banks" in this article indicates not only deposit-taking institutions but more broadly financial intermediaries vulnerable to runs. In March 2020 there was a run on mutual funds (Breckenfelder and Hoerova, 2023).

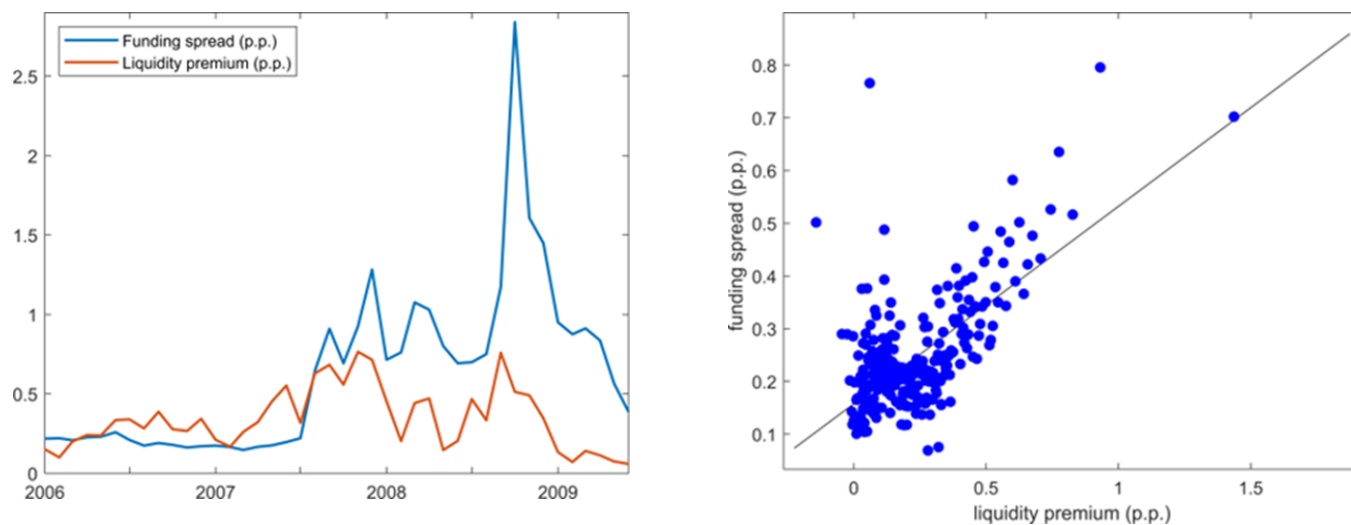
³ Under perfect information, investors in bank debt can coordinate on any commonly observed variable. Hence, a "sunspot" (i.e. a variable with no direct bearing on banks' creditworthiness) can trigger pessimism about banks. On the other hand, if investors do not all have the same knowledge, then they only coordinate on variables that are relevant for bank health.

⁴ This is the key difference between our paper and Gertler and Kiyotaki (2015), who also study a macroeconomic model with self-fulfilling bank runs but adopt a "sunspot" approach to the coordination problem of investors in bank debt.

⁵ More precisely, a bank's net worth is the difference between the marked-to-market value of its assets and its debt liabilities.

assets, were very high.⁶ The right-hand panel shows that expensive bank funding is generally associated with expensive liquidity, suggesting that this mechanism operates broadly, not just in financial crises.

Figure 1. Correlation of the liquidity premium and banks' funding spread



Notes: The funding spread is the three-month (3M) LIBOR minus the 3M general collateral (GC) repo rate. The liquidity premium is the 3M GC repo rate minus the 3M US Treasury Bill rate. The chart uses US data expressed in percentage points (p.p.). The left-hand panel shows the funding spread and liquidity premium at monthly frequency around the global financial crisis. The right-hand panel is a binned scatterplot (with 300 quantile-based bins) of daily data from May 1991 to June 2023.

Liquidity policy

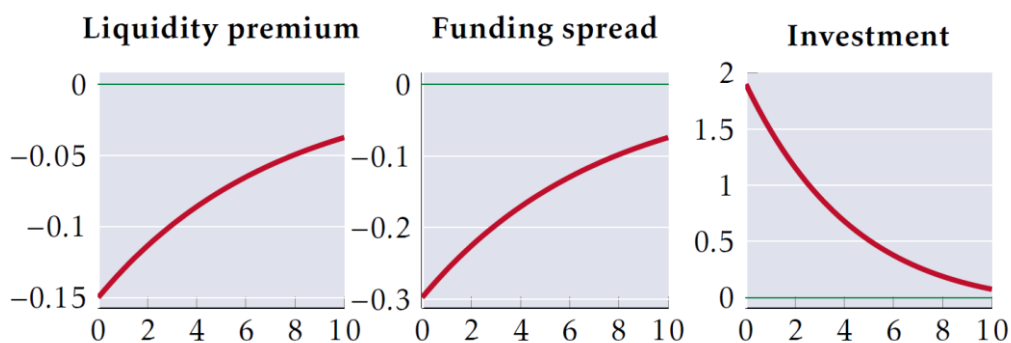
The role of policy in the model is to supply liquid assets, such as bank reserves.⁷ So we can use our framework to analyse the macroeconomic effects of liquidity policy. We find that an expansion in the supply of liquid assets is beneficial in the short run because it boosts banks' liquidity buffers.⁸ This makes pessimism less likely and thereby reduces the cost of funding for banks. Lower funding costs are passed through in the form of lower bank lending rates, thus increasing investment and GDP. Figure 2 shows the effects of a persistent increase in the supply of liquid assets that reduces the liquidity premium by 15 basis points on impact and is slowly unwound over time. On impact, the funding spread is reduced by 30 basis points, leading to an increase in investment of about 2%.

⁶ The funding spread is the rate at which banks borrow without collateral (LIBOR) minus a risk-free rate (repo rate), reflecting the premium required by investors to lend to banks. The liquidity premium is the risk-free rate minus the rate on US Treasury Bills, reflecting the return that investors are willing to forego to hold liquid assets such as US Treasuries.

⁷ While banks create liquid assets for other sectors of the economy, they cannot produce assets that maintain their value in the event of a systemic bank run. Hence, there is demand among banks for public liquidity. Holmström and Tirole (1998) make an analogous point about the role of public liquidity.

⁸ The implications for the long run are different. A permanently larger supply of liquid assets can reduce banks' net worth over time by suppressing banks' return on equity. This largely cancels out the beneficial effect on bank fragility of greater availability of liquid assets.

Figure 2. Effects of a liquidity supply shock



Notes: The impulse responses are expressed in percentage points for the liquidity premium and funding spread and in percentages for investment. The x-axis is the number of years after the shock.

We provide empirical evidence for the effectiveness of liquidity policy by studying the causal effect of the liquidity premium on banks' funding spread. The positive correlation between the liquidity premium and the funding spread in the right-hand panel of Figure 1 is not evidence of causality because the liquidity premium is not an independent random variable. To deal with this endogeneity problem, we use data on US Treasuries, a key liquid asset. Crucially, US Treasuries are issued after their auction with a lag of a few days.⁹ Hence, their outstanding quantity is predetermined at daily frequency and cannot possibly react either to the funding spread or to other drivers of the funding spread.¹⁰ With this in mind, we use the stock of outstanding US Treasuries as an instrument for the liquidity premium, essentially narrowing our focus to daily variation in the liquidity premium induced by changes in the outstanding stock of US Treasuries. And we find a significant positive effect, suggesting that the liquidity premium is indeed a causal driver of banks' funding costs.

The model implies that it is beneficial to supply public liquidity, such as bank reserves, elastically. When an adverse shock hits the economy, banks come under stress. Their demand for liquid assets increases, thereby pushing up the liquidity premium. By supplying extra bank reserves in response to this, the central bank can contribute to the stabilisation of the economy.

Conclusion

An important literature in finance formalises the idea that banks are exposed to the risk of bank runs. We take the methods described in the literature and adapt them so that bank runs can be integrated into a standard model used to study business cycles. This allows us to study the role of run risk in amplifying and propagating the business cycle and the role of policy in dampening it.

In this article, we focus on liquidity policy, but there are more dimensions of policy that we can study with our framework. The discount window, through which the central bank acts as the lender of last resort, and deposit insurance are important policies for financial stability and we analyse the effects of these in the paper.

⁹ On average, the lag is three days.

¹⁰ More precisely, the identification assumption is that the daily shock to outstanding US Treasuries is independent of daily shocks to the funding spread and to its other drivers. To focus on daily shocks, we include as controls in the regression 80 lags of economic and financial data, such as the US dollar exchange rate and the liquidity premium itself.

References

- Beck, T., Ioannidou, V., Perotti, E., Sánchez Serrano, A., Suarez, J. and Vives, X. (2024), “Addressing banks’ vulnerability to runs, part 1: Facts, arguments, and policy challenges”, *VoxEU column*.
- Bianchi, J. and Bigio, S. (2022), “Banks, Liquidity Management, and Monetary Policy”, *Econometrica*, Vol. 90(1).
- Breckenfelder, J. and Hoerova, M. (2023), “Do non-banks need access to the lender of last resort? Evidence from fund runs”, *ECB Working Papers Series*, No 2805.
- Drechsler, I., Savov, A. and Schnabl, P. (2018), “A Model of Monetary Policy and Risk Premia”, *Journal of Finance*.
- Diamond, D. and Dybvig, P. (1983), “Bank Runs, Deposit Insurance, and Liquidity”, *Journal of Political Economy*, Vol. 91(3).
- Gertler, M. and Kiyotaki, N. (2015), “Banking, Liquidity, and Bank Runs in an Infinite Horizon Economy”, *American Economic Review*, Vol. 105(7).
- Goldstein, I. and Pauzner, A. (2005), “Demand-Deposit Contracts and the Probability of Bank Runs”, *Journal of Finance*, Vol. 60(3).
- Holmström, B. and Tirole, J. (1998), “Private and Public Supply of Liquidity”, *Journal of Political Economy*, Vol. 106(1).
- Porcellacchia, D. and Sheedy, K. (2024), “The macroeconomics of liquidity in financial intermediation”, *ECB Working Papers Series*, No 2939.

About the author(s)

Davide Porcellacchia is an economist in the Research Department of the European Central Bank. His research interests are in banking and macroeconomics. He holds a PhD in Economics from the London School of Economics.

Kevin Sheedy is Assistant Professor of Economics at the London School of Economics. His research interests are in macroeconomics, monetary economics, political economy, housing markets and banking. He holds a PhD in Economics from the University of Cambridge.

SUERF Policy Briefs and Notes disseminate SUERF Members’ economic research, policy-oriented analyses, and views. They analyze relevant developments, address challenges and propose solutions to current monetary, financial and macroeconomic themes. The style is analytical yet non-technical, facilitating interaction and the exchange of ideas between researchers, policy makers and financial practitioners.

SUERF Policy Briefs and Notes are accessible to the public free of charge at <https://www.suerf.org/publications/suerf-policy-notes-and-briefs/>.

The views expressed are those of the authors and not necessarily those of the institutions the authors are affiliated with.

© SUERF – The European Money and Finance Forum. Reproduction or translation for educational and non-commercial purposes is permitted provided that the source is acknowledged.

Editorial Board: Ernest Gnan, David T. Llewellyn, Donato Masciandaro, Natacha Valla

Designed by the Information Management and Services Division of the Oesterreichische Nationalbank (OeNB)

SUERF Secretariat

c/o OeNB, Otto-Wagner-Platz 3A-1090 Vienna, Austria

Phone: +43 1 40 420 7206

E-Mail: suerf@oebn.at

Website: <https://www.suerf.org/>