

**POST-CRISIS RECOVERY  
AND  
PRODUCTIVITY SLOWDOWN**

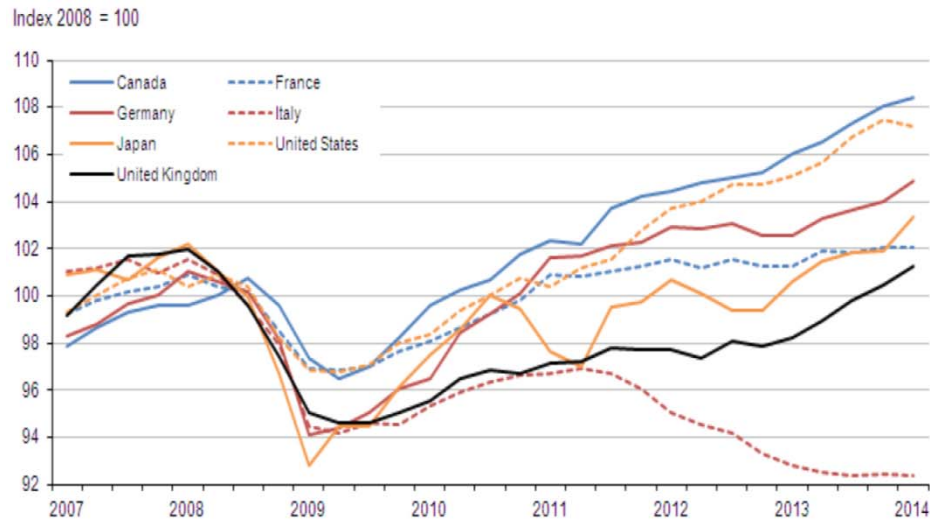
**A Misallocation Perspective**

Gianmarco I.P. Ottaviano

LSE, U Bologna, CEP and CEPR

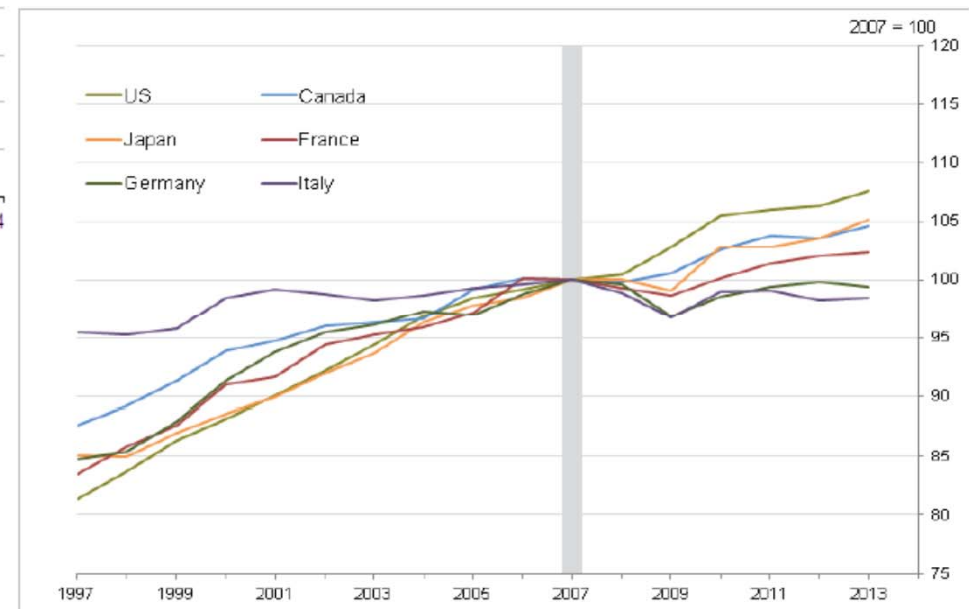
# Post-Crisis Recovery

## GDP recovery



## Productivity slowdown

Figure 5: Constant price GDP per hour worked, selected G7 countries

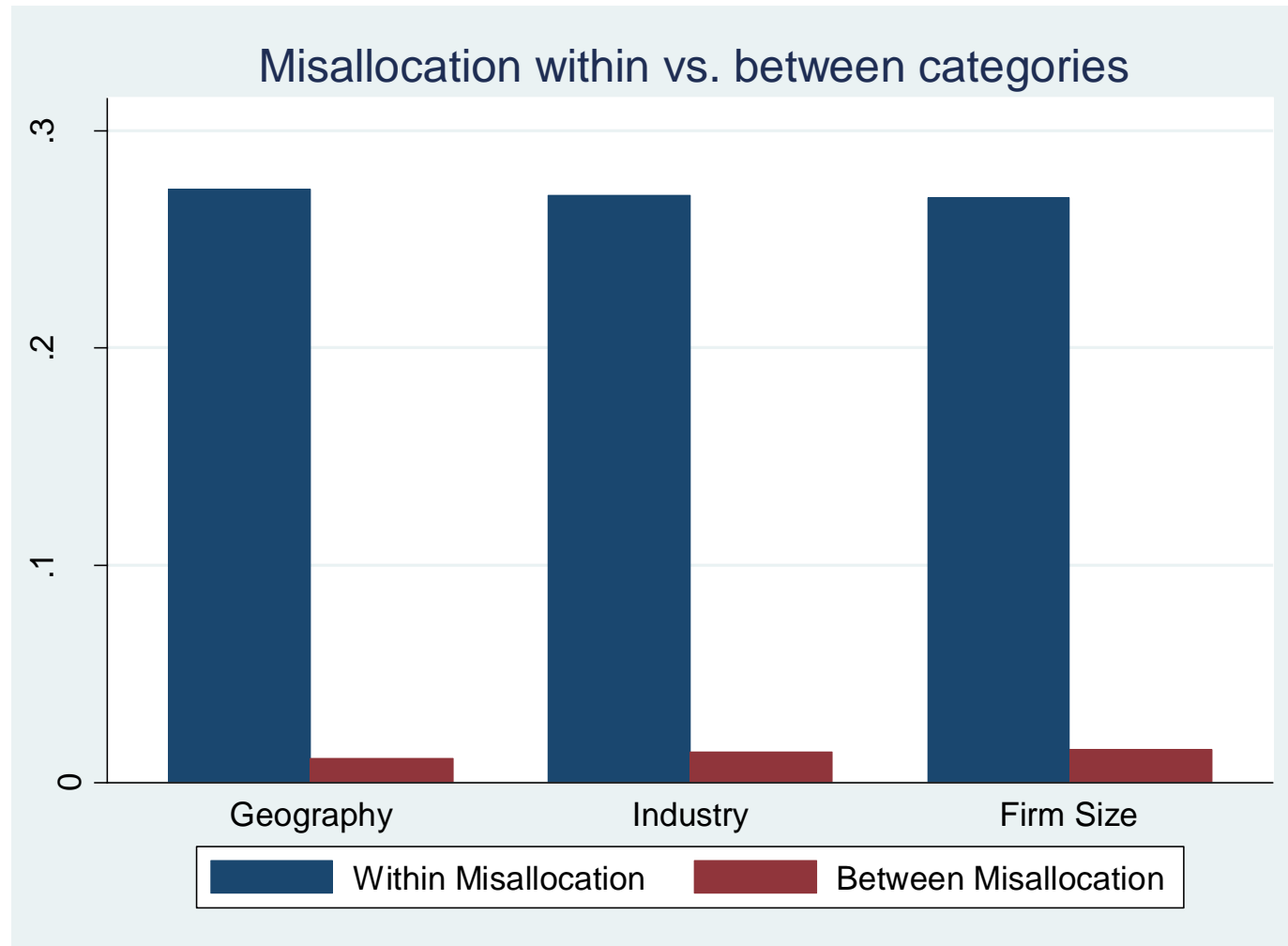


Source: ONS UK

# Misallocation

- **Productivity slowdown** may be due to (most) firms' productivity growth slowing down, ... or to more sluggish reallocation of inputs (labour/capital) from low to high productivity growth firms (i.e., rising 'misallocation')
- How to check? Need a measure of **misallocation**:
  - Suppose a firm employs the same amounts of inputs as the average firm but it has higher-than-average **revenue productivity** (i.e. generates more revenue with those amounts of inputs)
  - Then, as the firm can offer higher remuneration to inputs, it would be efficiency enhancing to increase the its amounts of inputs
  - If the firm got more inputs it would produce more, the price of its output would fall, its revenue productivity would also fall until it reaches average (efficient allocation)
- Hence, the **variance** of revenue productivity across firms can be used to measure misallocation –**between** and **within** e.g. sector/country/firm-size categories

# Italy - Within more than Between

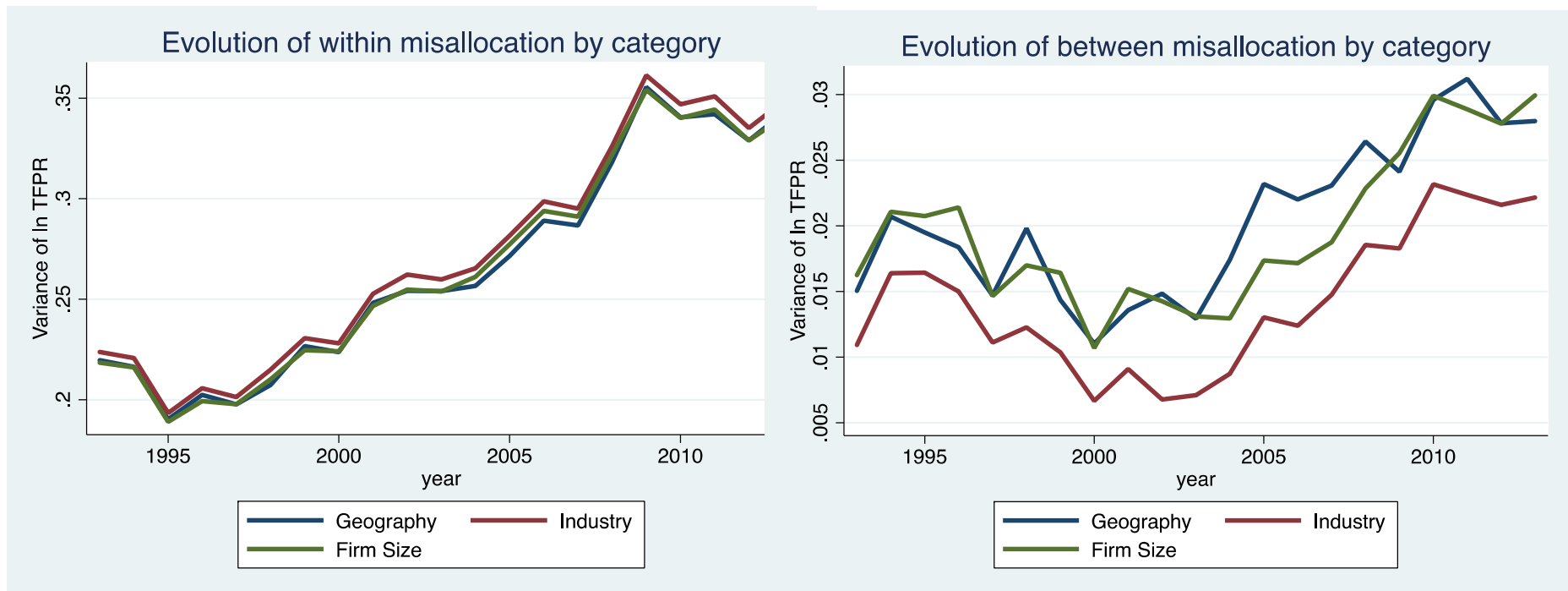


Geography: Northwest, Northeast, Centre, South with Islands

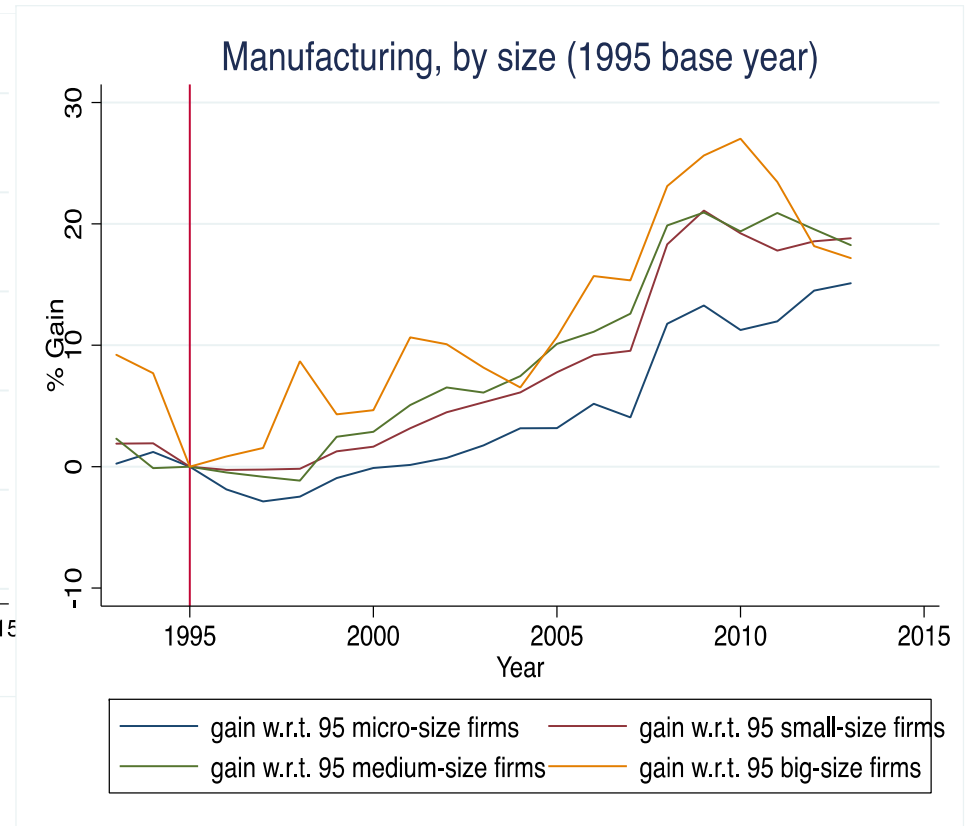
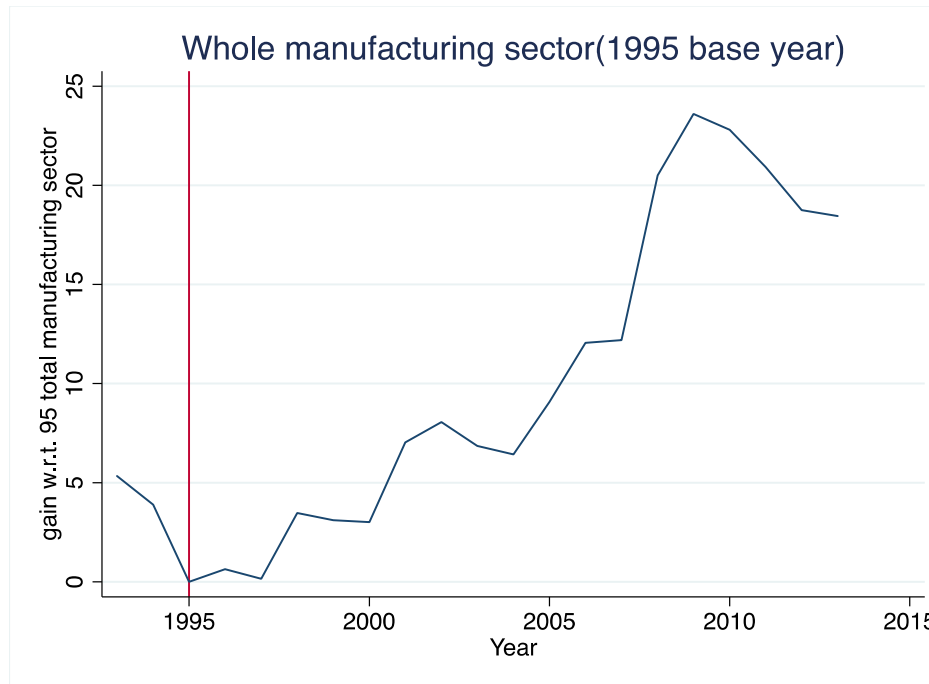
Sectors: manufacturing (2-digits ATECO) service (1-digit ATECO)

Firm size (definition by turnover, millions of euros): micro( $\leq 2$ m), small ( $\leq 10$ m), medium ( $\leq 50$ m), big ( $> 50$ m)

# Italy – Within outpaced Between



# Italy – Gains from Better Allocation



- **Markers of within misallocation:** Ownership structure, Access to finance, Workforce composition, Internationalization, Innovation, Cronyism, Euro effect, ...
- **For example:** Firms that have a higher share of **intangible assets** (so innovate more, invest more in branding, R&D etc. ) are more productive and more misallocated